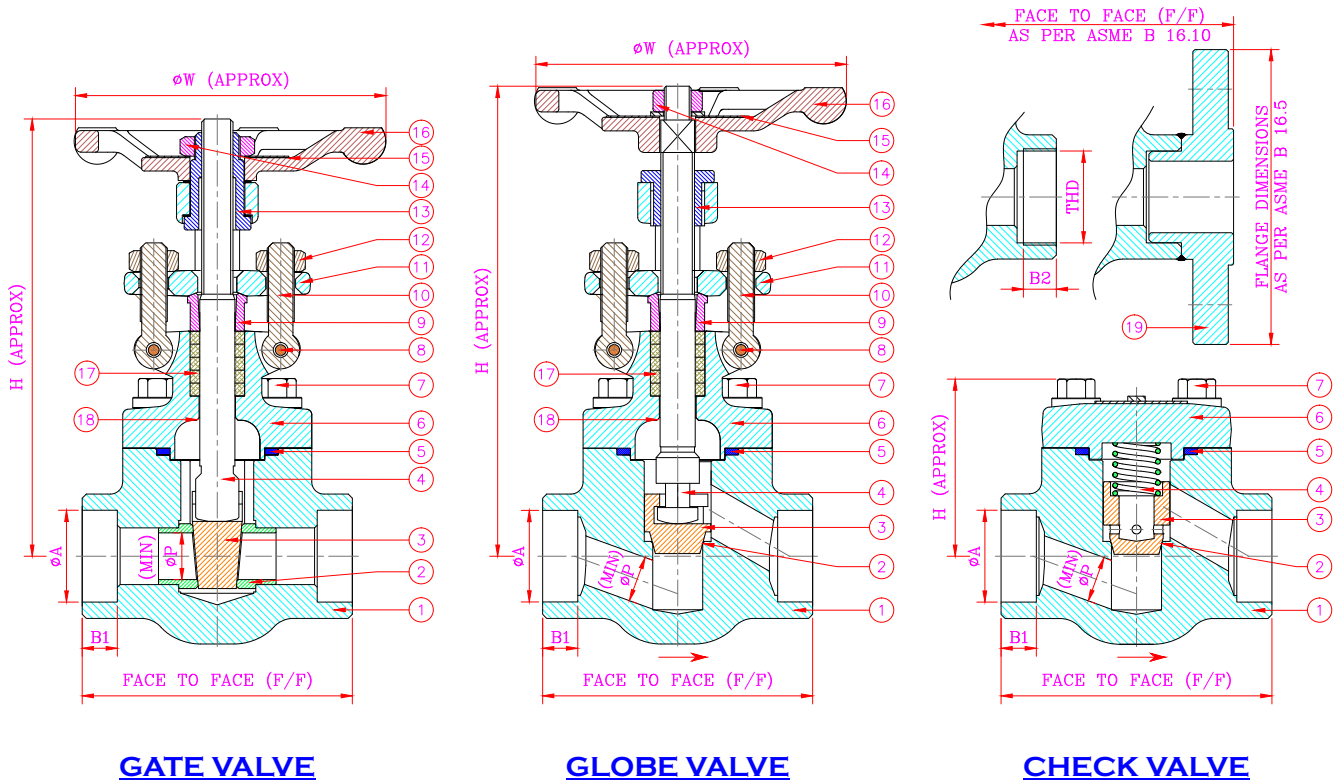


FORGED STEEL VALVE



GATE VALVE

GLOBE VALVE

CHECK VALVE

MATERIAL SPECIFICATION :-

S.R. NO.	PART NAME	MATERIAL	QTY.
1	BODY	A105 / LF2 / F11 / F22 / F5 / F9 / F304L / F316L	1 NO.
2	SEAT RING	INTEGRAL+13% Cr OR ST-6 (GLOBE & CHECK) / AISI 410 / AISI 304 / AISI 304L / AISI 316 / AISI 316L / INCONEL	AS REQ.
3	WEDGE / PLUG	CA-15 / CF8 / CF3 / CF8M / CF3M / INCONEL	1 NO.
4	STEM	AISI 410 / AISI 304 / AISI 304L / AISI 316 / AISI 316L / INCONEL	1 NO.
5	GASKET	SS304 / SS304L / SS316 / SS316L (SPIRAL WOUNDED WITH GRAPHITE FILLER)	1 NO.
6	BONNET	A105 / LF2 / F11 / F22 / F5 / F9 / F304L / F316L	1 NO.
7	HEX BOLT	A 193 Gr. B7 / B8 / B16 / A 320 Gr. L7	4 NO.
8	EYE BOLT PIN	AISI 410 / AISI 304 / AISI 304L / AISI 316 / AISI 316L	2 NO.
9	GLAND BUSH	AISI 410 / AISI 304 / AISI 304L / AISI 316 / AISI 316L / INCONEL	1 NO.
10	EYE BOLT	A 193 Gr. B7 / B8 / B16 / A 320 Gr. L7	2 NO.
11	GLAND FLANGE	A105 / LF2 / F11 / F22 / F5 / F9 / F304L / F316L	1 NO.
12	EYE BOLT NUT	A 194 Gr. 2H / 4 / 8	2 NO.
13	YOKE SLEEVE	A 582 Gr. SS416	1 NO.
14	STEM NUT	A 194 Gr. 2H / 4 / 8	1 NO.
15	NAME PLATE	STAINLESS STEEL	1 NO.
16	HAND WHEEL	M.I. / SG IRON	1 NO.
17	GLAND PACKING	FLEXIBLE GRAPHITE RINGS	AS REQ.
18	BACK SEAT	INTEGRAL	-
19	FLANGE	A105 / LF2 / F11 / F22 / F5 / F9 / F304L / F316L	2 NO.

DIMENSIONS :-

ALL THE DIMENSIONS ARE IN MM. UNLESS OTHERWISE STATED.

VALVE SIZE	MANUFACTURERS STD.									ASME B 16.11		ASME B 1.2.1		GATE VALVE			GLOBE VALVE			CHECK VALVE									
	800#			1500#			2500#			SOCKET END		NPT / BSP		H (OPEN/ CLOSE)			H (OPEN/ CLOSE)			H									
NB	INCH	F/F	øP	øW	F/F	øP	øW	F/F	øP	øW	øA	B1	B2	THD	800#	1500#	2500#	800#	1500#	2500#	800#	1500#	2500#						
10	3/8"	73	6.4	86	80	6.4	86	-	-	-	17.6	9.5	14.0	3/8"	151	135	151	138	-	159	143	160	148	-	53	56	-		
15	1/2"	73	9.5	86	80	9.5	86	100	7.0	116	21.8	9.5	14.0	1/2"	151	135	151	138	187	174	159	143	160	148	178	162	53	56	66
20	3/4"	80	12.7	86	100	12.7	116	120	12.5	150	27.2	9.5	16.0	3/4"	157	137	178	169	224	204	162	146	187	174	227	207	56	66	86
25	1"	100	17.5	116	120	15.9	150	130	15.5	150	33.9	12.5	20.0	1"	186	162	227	207	261	239	191	171	224	204	256	224	66	86	104
32	1.1/4"	120	23.8	150	130	22.2	150	140	21.5	225	42.7	12.5	20.0	1.1/4"	237	201	227	207	318	290	228	199	224	204	303	263	86	86	127
40	1.1/2"	120	28.6	150	130	27.0	150	140	26.5	225	48.8	12.5	24.0	1.1/2"	237	201	256	224	318	290	228	199	261	239	303	263	86	104	127
50	2"	130	36.5	150	140	34.9	225	-	-	-	61.2	16.0	26.0	2"	268	223	303	263	-	-	265	236	318	290	-	104	127	-	

NOTE:-

- FACE TO FACE DIMENSIONS WITH FLANGED END AS PER ASME B 16.10.
- FLANGE AS PER ASME B 16.5
- 2500# VALVES ARE HAVING WELDED BONNET.
- IBR APPROVED & BUTT WELD END VALVES ARE ALSO PROVIDED ON REQUEST.

FORGED STEEL VALVE